

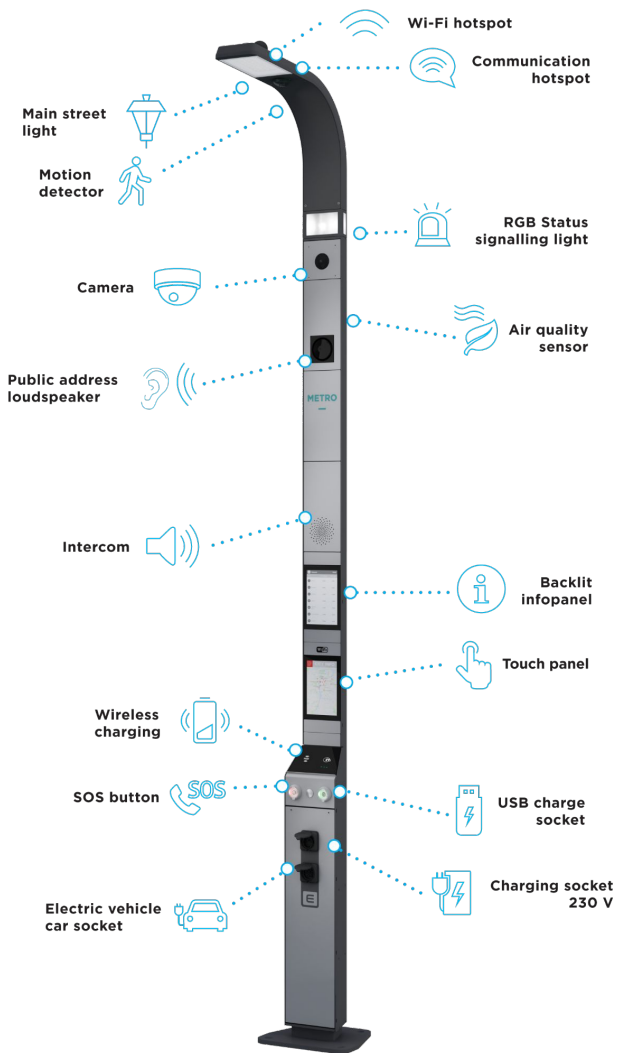
Penerapan Teknis 37122

Teddy Sukardi
tedsuka@indo.net.id

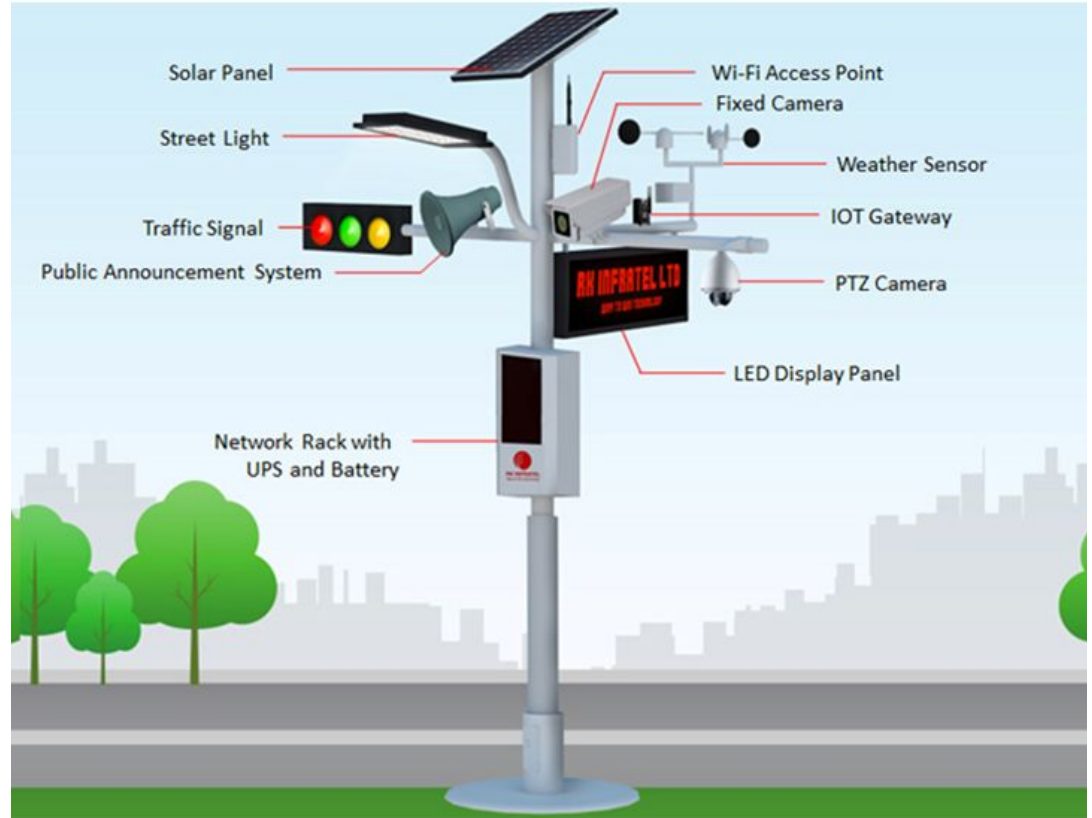
Pemanfaatan Jaringan Internet (Internet of Things)

Melalui jaringan dilakukan pengumpulan data dari berbagai perangkat (perangkat sensor) dan pengendalian peralatan yang selama ini perlu intervensi manusia (perangkat aktuator)

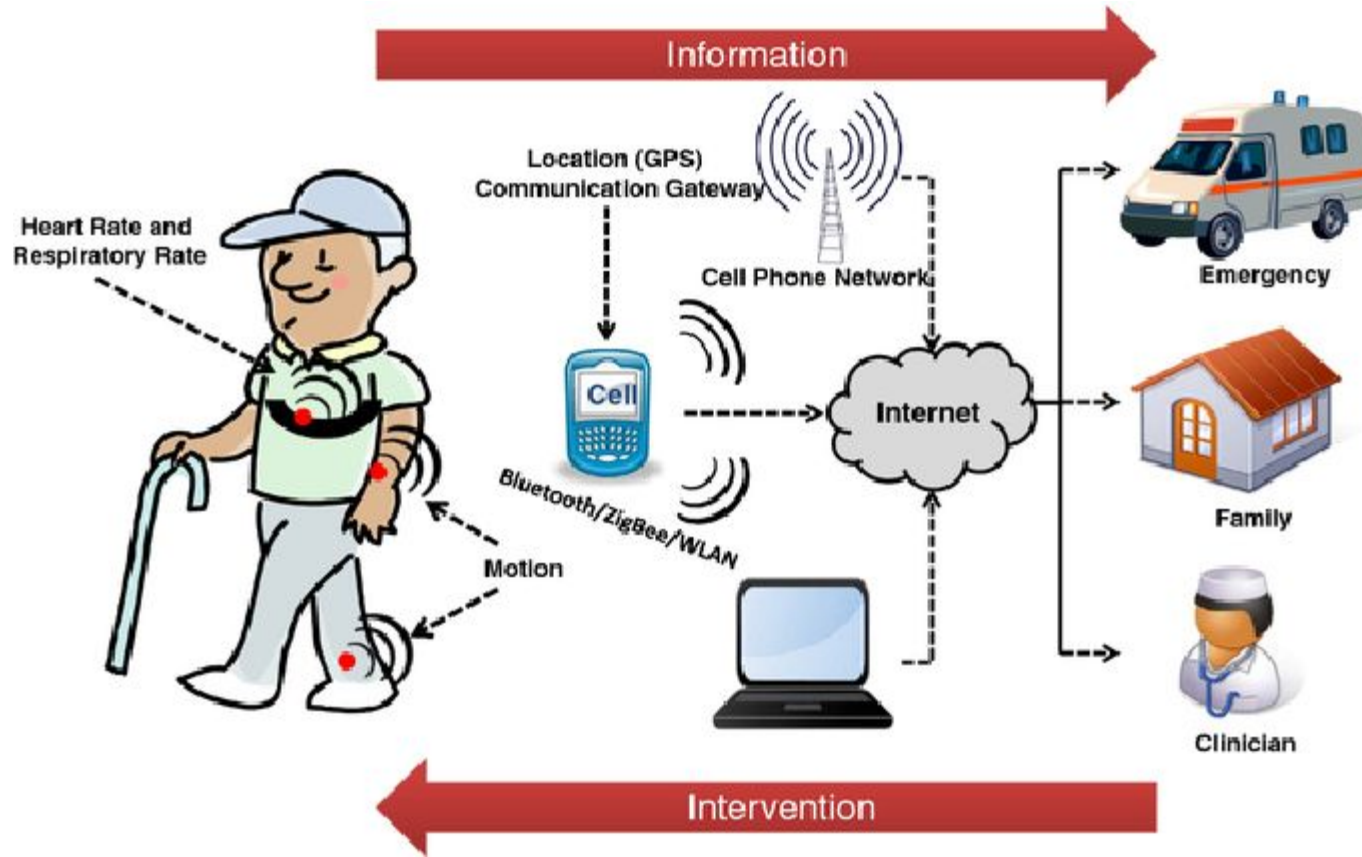




Infrastruktur Perkotaan Terpadu Multi Fungsi (Smart Pole)

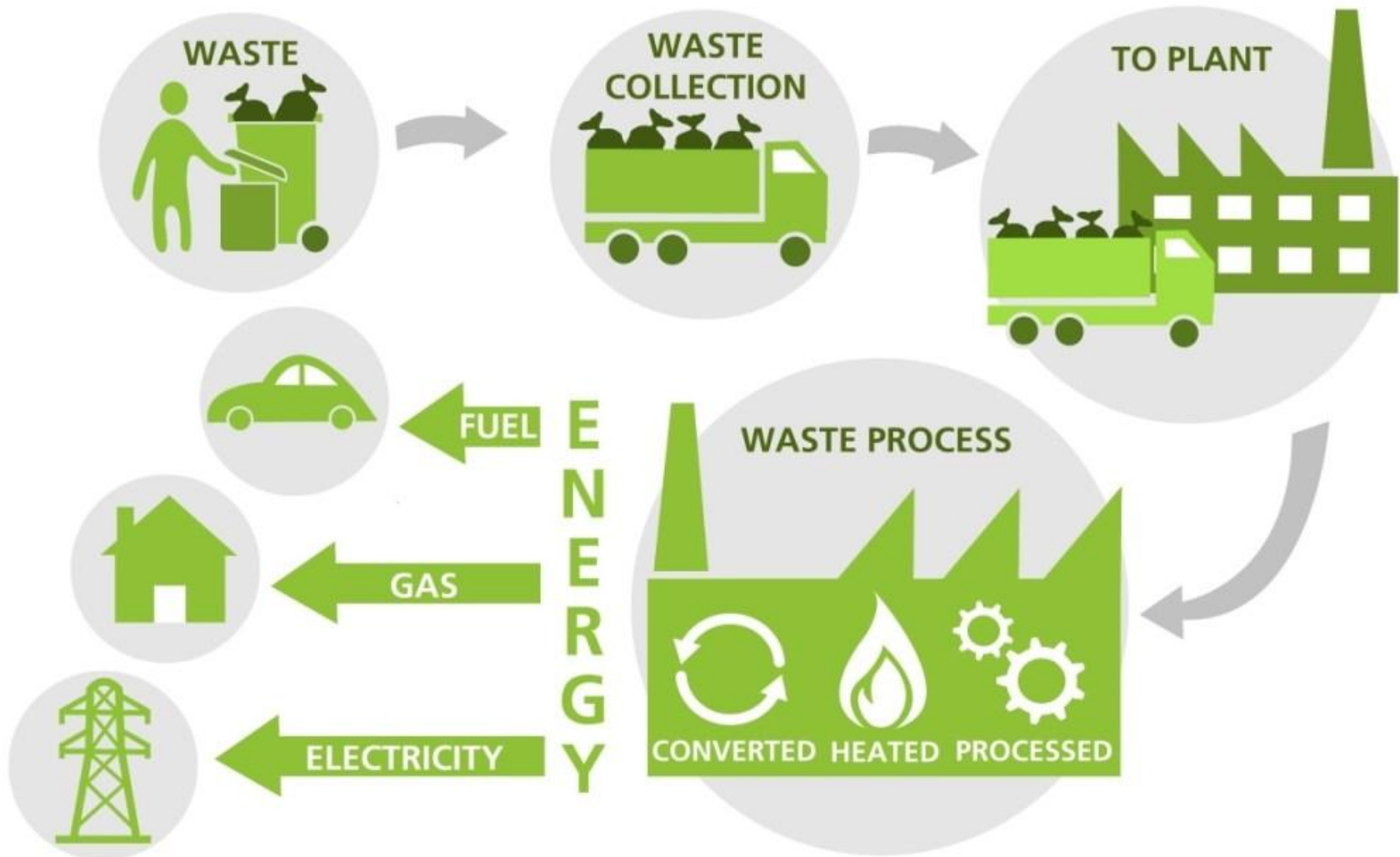


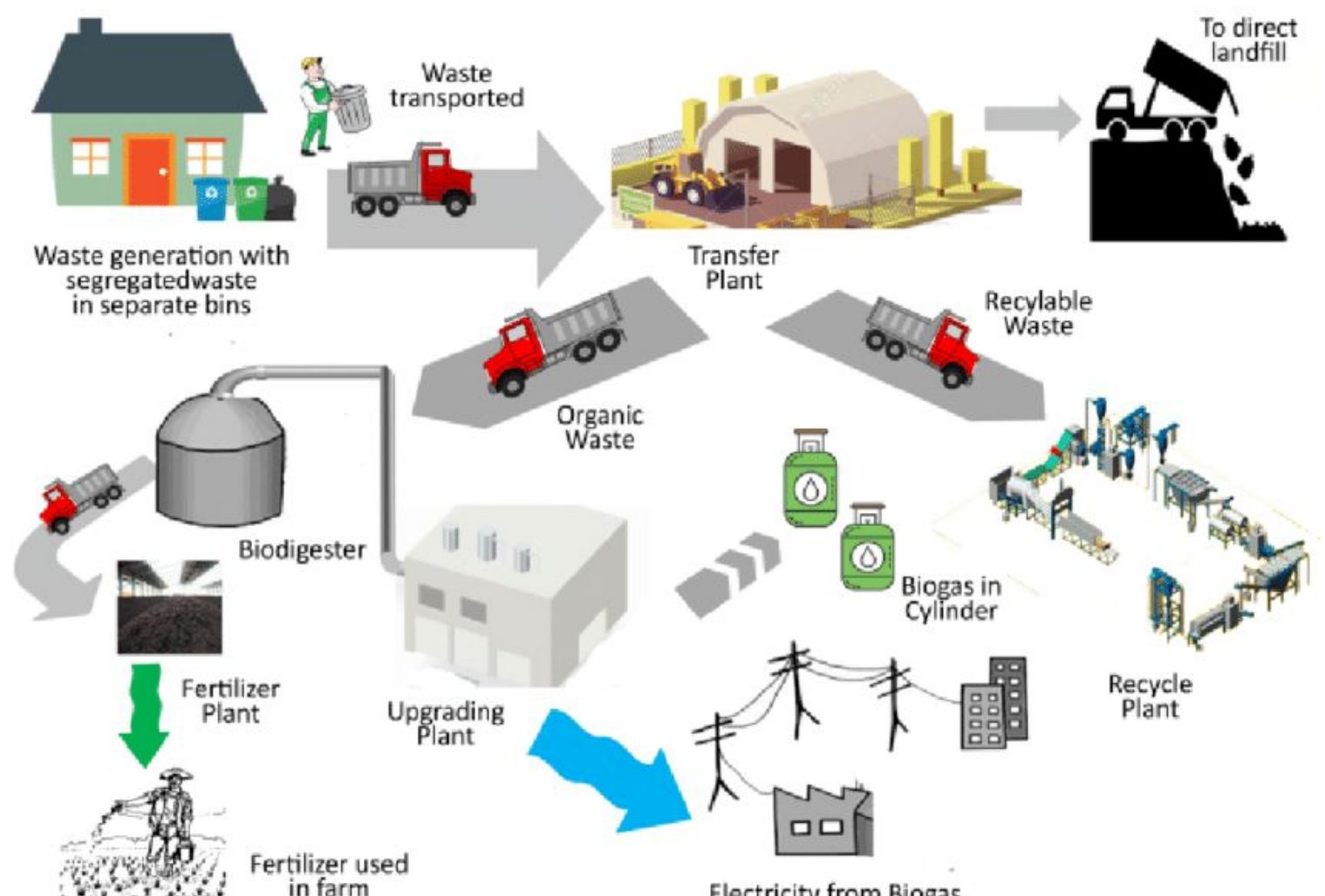
Pemanfaatan Jaringan Untuk Layanan Kesehatan



Penerapan Layanan Media Jarak Jauh



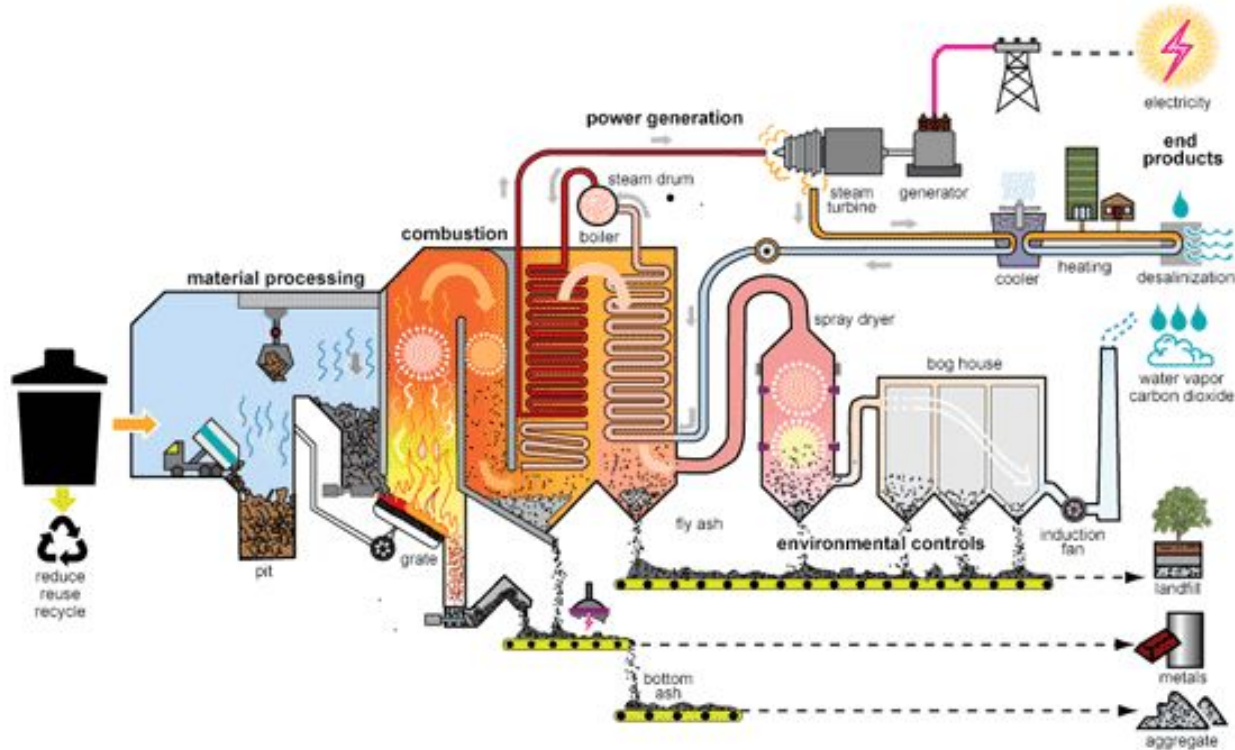




Pengelolaan Sampah Perkotaan



Pemanfaat Limbah untuk energi



Infrastruktur Perkotaan dengan layanan digital



Pertanian Perkotaan Skala Besar



Pertanian Perkotaan: memanfaatkan lahan terbatas



Penerapan Energi Terbarukan mandiri pemukiman



Penerapan Energi terbarukan



Penerapan Pertanian Perkotaan: Aquaphonic



Inovasi sistem perparkiran



Penggunaan sistem pembayaran elektronik yang terpadu



Octopus card 八達通



Adult version of the Octopus card since 2017

Location	Hong Kong
Launched	1 September 1997; 23 years ago
Technology	FeliCa NFC
Operator	Octopus Cards Limited
Currency	HKD (HK\$3,000 maximum load)
Stored-value	Pay as you go
Auto recharge	Automatic Add Value Service (through credit cards)
Validity	MTR, MTR Light Rail Hong Kong Tramways, Peak Tram MTR Bus Citybus, Kowloon Motor Bus, Long Win Bus, New Lantao Bus, New World First Bus Star Ferry, New World First Ferry, Coral Sea Ferry, Hongkong and Yaumati Ferry, Fortune Ferry a few taxis Convenience stores, Supermarkets, Fast-food restaurants Parking, Vending machines
Website	octopus.com.hk



Quick Pay

Users present their WeChat Pay payment code to the merchant. Merchants scan the code to take the payment.



QR Code Payment

Users open WeChat to scan the code, confirm the amount, and make the payment after passing the security checks.



Mini Program Payment

Users pay for goods or services in Mini Programs created inside WeChat.



Official Account Payment

Users can pay for goods and services inside the merchant's Official Account.



In-App Payment

Users make purchases in merchant apps using WeChat Pay.



Web Payment

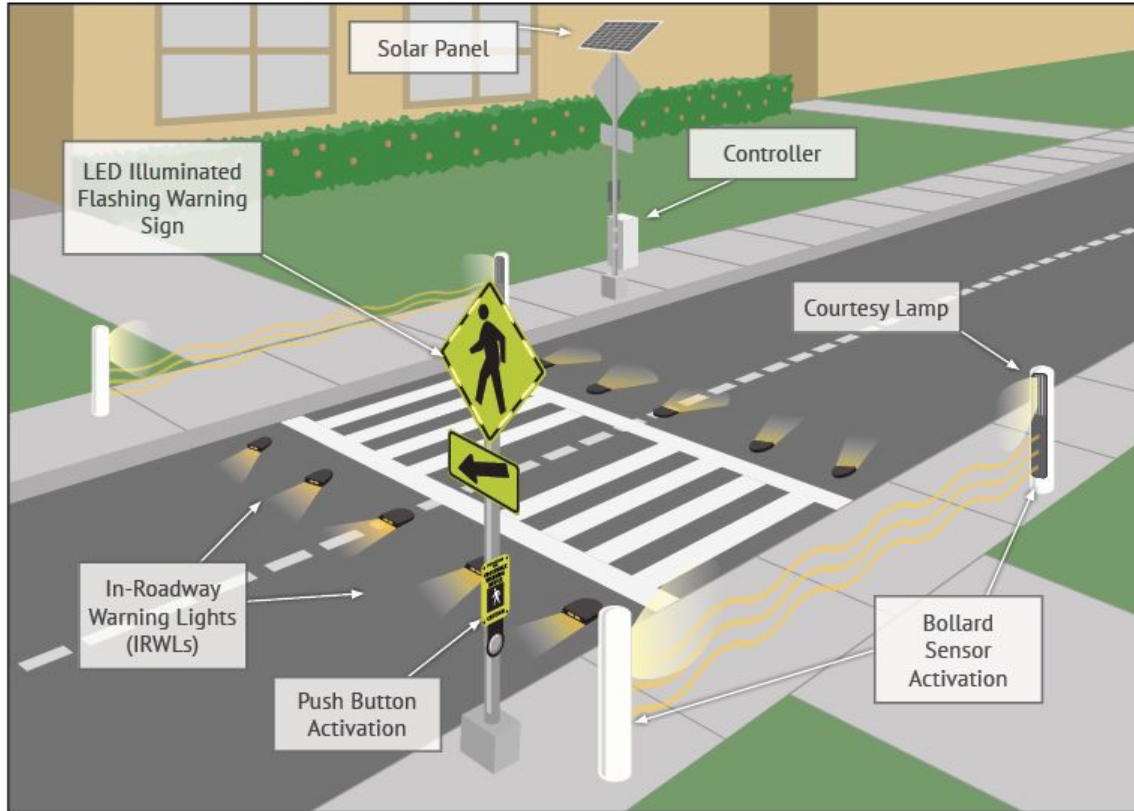
Users use WeChat's "Scan" feature to scan a payment code on a web page to make a payment.



Customs Clearance

Merchants that need to declare goods for a customs procedure can clear customs quickly through this tool.

Penyeberangan Orang





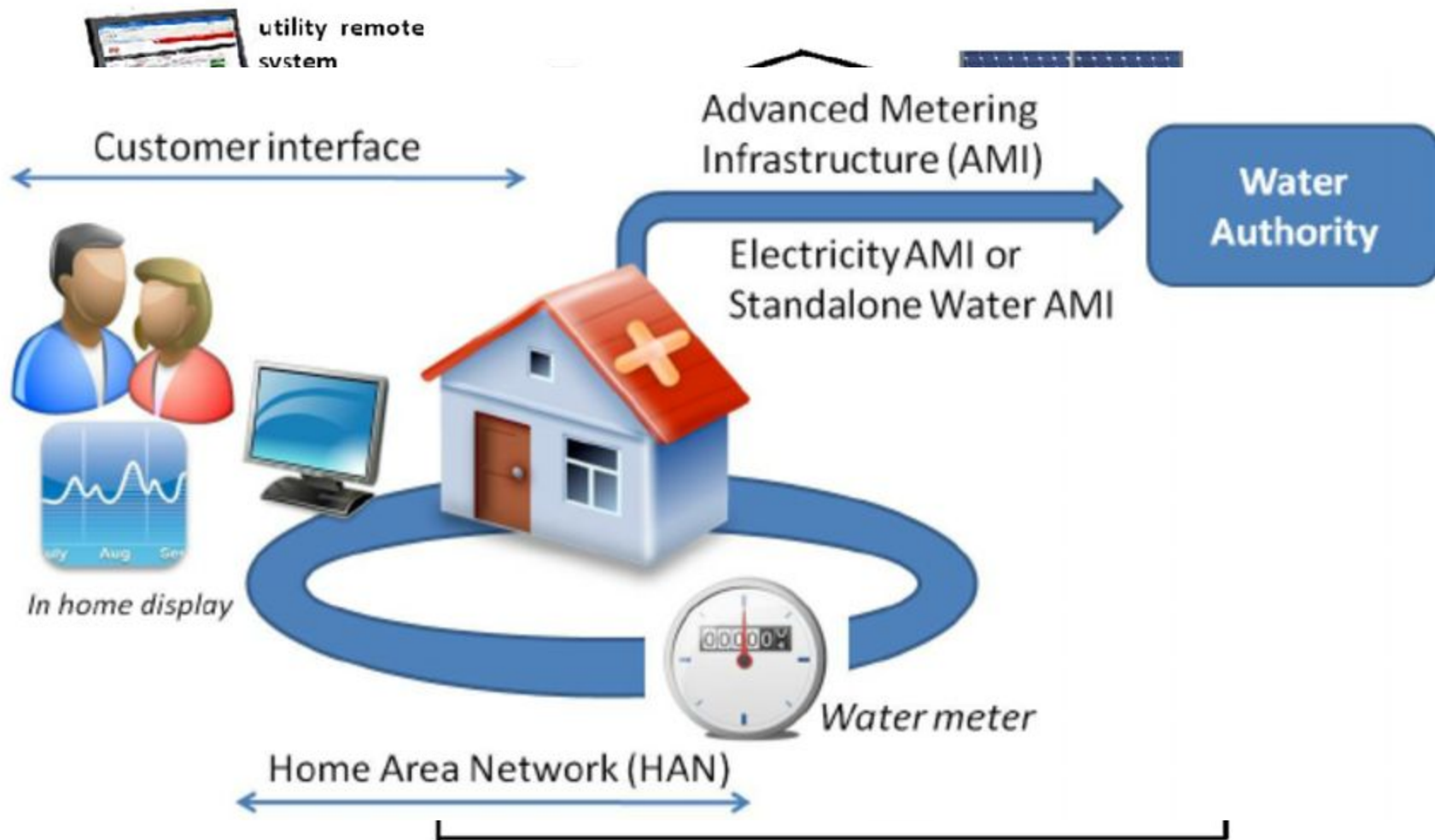


Figure 1 – The proposed house devices architecture.

Penerapan Portal Data Terbuka

untuk dapat dengan mudah dimanfaatkan dan diolah lebih lanjut secara legal dan secara teknis



Salam Data!



dataGo
Sistem Informasi Manajemen Kota Magelang



Data Strategis Triwulan



Data Indikator Makro



Daerah Dalam Angka



Data Pilah Gender



Statistik Kelurahan



Indikator Kinerja



Geospasial



Elibrary



Statistik Update



Open Data



PPID



Perkembangan Harga

[Download](#)

[Berita](#)

[Forum](#)

[Tematik](#)

[Login](#)

[Statplanet](#)

[Metaddata](#)

[Permohonan Informasi](#)

[IKU\(demo\)](#)

Dinas Komunikasi Informatika dan Statistik Kota Magelang

Jl Jend. Sarwo Edhie Wibowo No. 2 Kota Magelang

Telp 0293 360990



" Dengan Data Fakta Berbicara Lebih Nyata "